

The Town of

LEWISBORO *New York*

Wireless Telecommunications Polling Results and Zoning Discussion

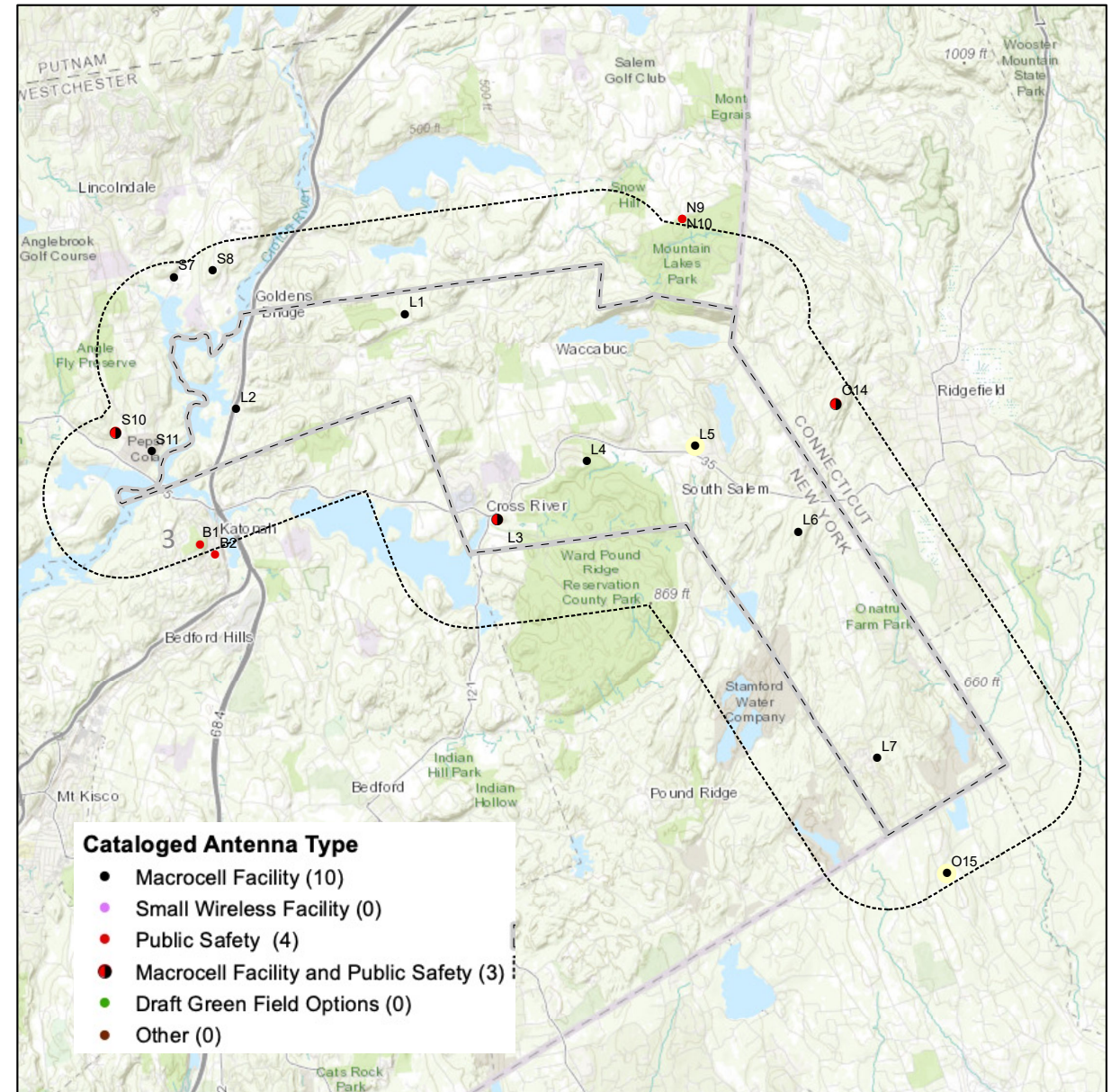
February 28 , 2022

CityScape
CONSULTANTS, INC.

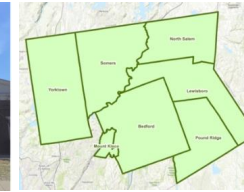


Town of Lewisboro “Wireless Infrastructure Poll”

- Solicit information from the community regarding thoughts, concerns and preferences regarding wireless infrastructure facilities.
- Created and designed to promote open engagement from citizenry, staff, stakeholders and elected officials of the Town.
- August 11th to September 7th poll open
- Twenty-five (25) questions and forum for comments
- 477 respondents
- Results are intended to inform and guide the development of the Wireless Master Plan reflecting the preferences of the community.
- The preferences will also guide the Town on code updates to reflect current conditions and federal guidelines.
- The opinions expressed regarding wireless infrastructure are important to the process and should be taken into account when discussing future site locations. [The results are as follows:](#)



Summary



GAP ANALYSIS

Distance between existing wireless facilities is too great for adequate handoff resulting in dropped calls along transportation networks as verified by the Poll respondents. Many more facilities are needed to achieve initial coverage throughout the Town. Adding more sites may also improve 10-year capacity projections. Additional wireless facilities to address network capacity issues are needed in the southern portion of the Town as residential and commercial growth and increased usage of recreation and public services evolve.

POLLING RESULTS

RESPONSES	Lewisboro	LARGER STUDY AREA
PARTICIPANTS	477	2,872
Use Of Device		
-Personal and Recreation/Leisure	94.3%	84.2%
- Employment Related	71.5%	59.3%
Wireless Coverage at Residence Poor		
- Excellent or Acceptable	42.3%	45.7%
- Poor or Inconsistent	57.0%	53.2%
Wireless Coverage at Work		
- Excellent or Acceptable	34.4%	37.0%
- Poor or Inconsistent	34.6%	30.0%
Wireless While Travelling Around Town		
- Excellent or Acceptable	25.9%	41.1%
- Poor or Inconsistent	73.1%	57.8%
Would Rely More on Device if Network was Better		
- Entirely Agree	66.2%	59.9%
What is Most Important to You?		
-Excellent Connectivity	60.6%	57.5%
-Good Connectivity and Minimal Visual Impact	35.2%	37.1%
Prefer Taller Tower Supporting Multiple Collocations	52.3%	46.2%
Non-Concealed Tower Preference – Monopole	63.4%	62.3%
Concealed Tower Preference – Flag Pole	68.6%	69.8%
Rooftop Preference – Concealed	79.0%	78.0%
Small Wireless Facility Preference - Concealed	88.7%	89.7%
Locational Preference in Town - Anywhere	64.2%	60.6%
Support Use of Public Property for Revenue and Aesthetics – Yes	56.3%	53.8%

KEY POINTS OF ZONING ANALYSIS

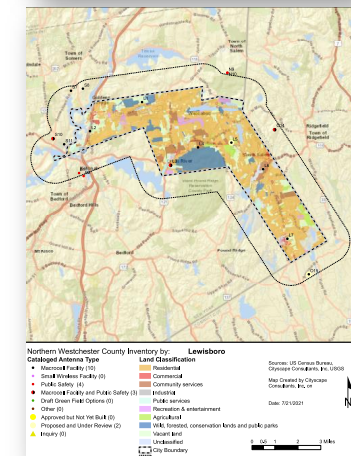
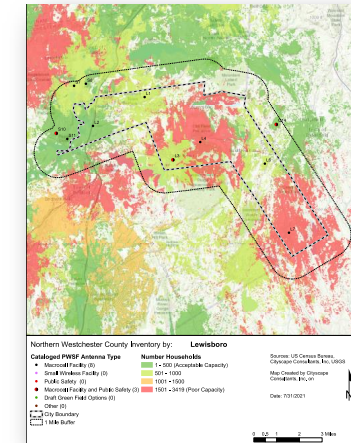
- AAB great resource to Town.
- Existing code updated recently to include treatment of "eligible facilities request" and comprehensive approach to regulating communication facilities.
- Need to update Section 220-41.1.H.(1)(c) and (d).
- Concerns:
 - Section 220-41.1.B.(7) Verifiable list of complaints levied against the FCC- licensed provider.
 - Section 220-41.1.D.(7) Emissions safety and compliance report and certification.
 - References to "immediate revocation" and "cease operation".
- Gap maps allow proactive planning for future wireless infrastructure.
- Community polling responses may be used for future policy decisions.
- Updates needed to address new shot clocks and deployment of small wireless facilities.

Town of Lewisboro

27.75 sq. mi.

Population: 12,552

Total Macro Facilities: 6



Section 220-41.1. Communication facilities, commercial towers, antenna towers or monopoles

222-41.1.B. Regulatory Compliance

(7) ...demonstration shall include a verifiable list of complaints levied against the FCC-licensed telecommunications service provider...

222-41.1.D. Application Requirements

(2) “service coverage map”

Code of Federal Regulation Title 47 Chapter 1 Subchapter A Part 1 Subpart U for collocations:

- 1.6100.(c) “A State or local government may not deny and shall approve any eligible facilities request for modification of an eligible support structure that does not substantially change the physical dimensions of such structure.”
- 1.6100.(c)(1). “A State or local government may not require an applicant to submit any other documentation, including but not limited to documentation intended to illustrate the need for such wireless facilities or to justify the business decision to modify such wireless facilities.”

Section 220-41.1. Communication facilities, commercial towers, antenna towers or monopoles

222-41.1.G. Interference.

- (3) Failure to correct or eliminate the interference shall be subject to the immediate revocation of any and all operating permits, including any special permit, as issued by the Town of Lewisboro.

FCC is the sole regulatory agency and Town must contact the FCC and have the FCC address the concerns.

222-41.1.H Alterations, amendments and waiver of application requirements.

Harmonize with definitions of FCC's Code of Federal Regulations.