



NPV

# Town of Lewisboro Virtual Meeting

---

FEBRUARY 13, 2023

TASK		PROPOSED SCHEDULE																				
		MONTH																				
No.	Title	JUN	JUL	AUG	SEP	OCT	NOV	DEC	JAN	FEB	MAR	APR	MAY	JUN	JUL	AUG	SEP	OCT	NOV	DEC	JAN	
A.	Project Kickoff																					
	Document Review																					
	Kickoff Meeting	•																				
	Site Visit																					
B	Community Outreach Plan		•																			
C	Existing Conditions																					
	Existing Conditions Analysis			•		•	•															
	Opportunity Sites																					
	Draft Report																					
	First Workshop, Public Survey and Meetings with Town Boards, Councils, and Committees																					
D	First Workshop								◊	◊												
	Public Online Survey									•												
	Town Committee Meetings																					
	Town Land Use Board and Council Meetings																					
	Town Board Work Sessions									○	○											
E	Develop Vision, Goals and Objectives																					
	Visioning, Goals, Objectives										•											
	Public Workshop (Town and Hamlets)											◊	◊									
	Town Land Use Board and Council Meetings																					
	Town Board Work Session													○								
F	Draft Comprehensive Plan																					
	Draft Comprehensive Plan														•		•					
	Town Board Review/Meetings																○	○				
	Public Hearing																		◊			
G	Zoning Amendments																					
	Prepare Zoning Amendments																	•	•			
	Public Workshop																	◊				
	Town Board Review/Meetings																			○		
H	SEQRA/Adoption																					
	SEQR EAF Part I, II, and III																					
	Town Board Hearing																		◊			
	Town Board Review/Meetings																			○		
	Adoption of Plan/Zoning																				○	

• Comprehensive Plan Committee Meetings  
◊ Public Workshop/Public Hearing

○ Town Board Meetings

# Deliverables

---

## Existing Conditions Report

### **Baseline Inventory** (Where are we now?)

Provides the basis for recommendations and further analysis

- Maps & Data
- Community Engagement Strategy
- Existing Conditions Report

## Comprehensive Plan

### **Vision, Goals, Objectives & Recommendations** (where are we going?)

- Public Outreach
- Surveys & Workshops
- Draft Document
- Refer to the Town Board

## Zoning Amendments

### **Comprehensive Plan Recommendations become Draft Zoning**

- Draft zoning
- State Environmental Quality Review
- Town Board Adopts Plan and Zoning together

# Inventory and Analysis



- **Plan Topics:**
  - Land Use & Zoning
  - Environmental Resources
  - Transportation & Mobility
  - Community Facilities
  - Infrastructure – stormwater, sewer, water, and wireless communications
  - Demographics
  - Housing
  - Economics
  - Parks and Recreation/Open Space
  - Historic and Scenic Resources
  - Resiliency & Climate Change
  - Community Character

# Population of Lewisboro

---

Jurisdiction	1990	2000	2010	2020	Percent Change: 1990 to 2020
Westchester County	874,866	923,459	949,113	1,004,457	12.90%
Town of Lewisboro	11,313	12,324	12,411	12,265	7.76%
Source: 1990, 2000, 2010, and 2020 Decennial Census.					

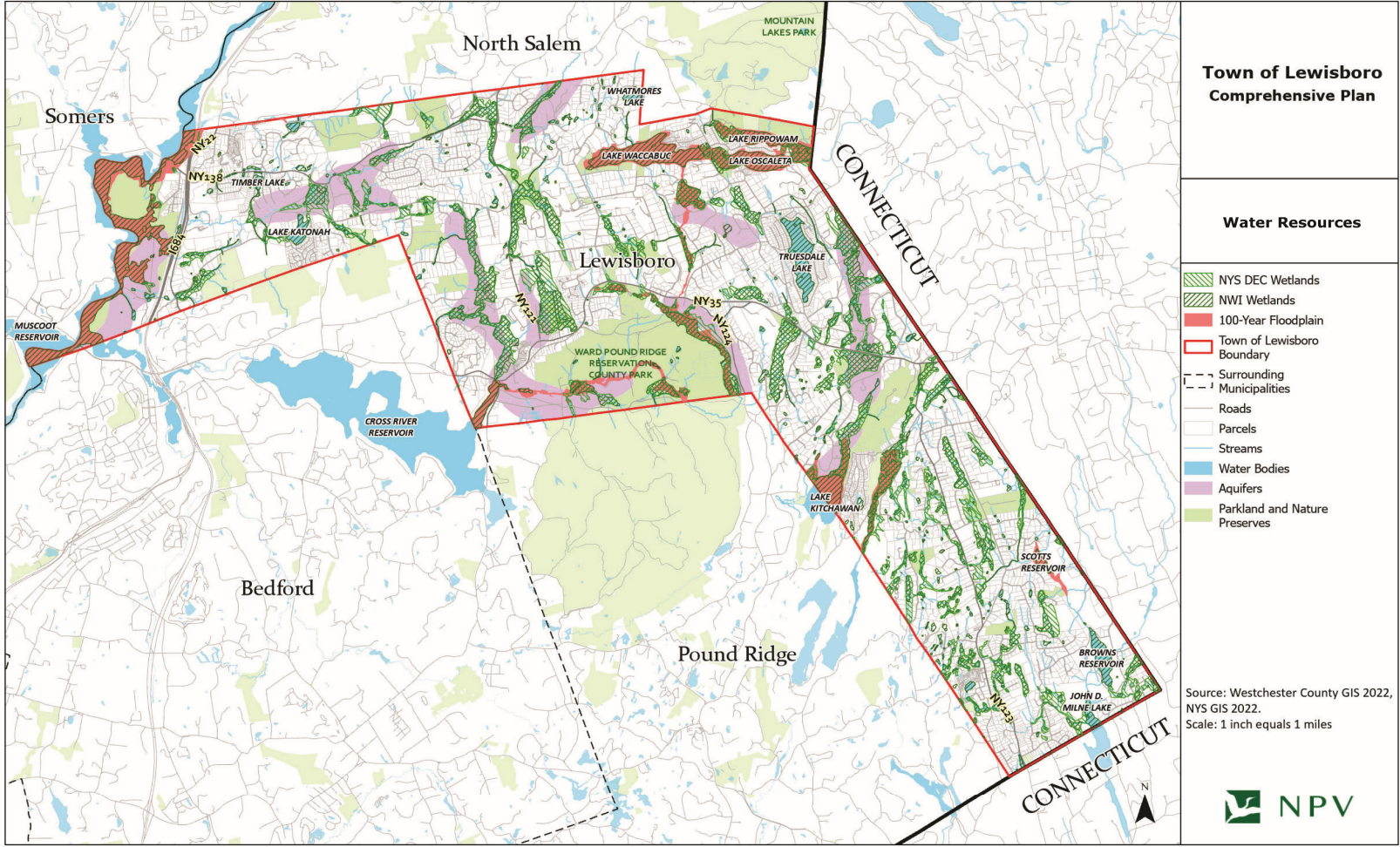
# Race/Ethnicity of Lewisboro

	Town of Lewisboro				Westchester County	
	2010		2020		2020	
	Count	Percent of total	Count	Percent of total	Count	Percent of total
Total Persons	12,411	100%	12,265	100%	1,004,457	100%
White Alone	11,187	90.1%	10,107	82.4%	497,684	49.5%
Black or African American Alone	153	1.2%	191	1.6%	131,010	13.0%
American Indian and Alaska Native Alone	8	<1%	8	<1%	1,017	<1%
Asian Alone	294	2.4%	435	3.5%	64,907	6.5%
Pacific Islander Alone	1	<1%	0	0%	150	<1%
Some Other Race Alone	27	<1%	71	<1%	8,651	1.0%
Two or More Races	189	1.5%	484	3.8%	31,704	3.2%
Hispanic Origin	552	4.4%	969	7.9%	269,334	27.0%
Source: 2010 and 2020 Decennial Census. Note: Numbers may add up to more than 100% due to rounding.						

## Land Use

Land Use	Acres	Number of Tax Parcels	% Acres in Town	% Tax Parcels in Town
Wild, Forested, Conservation Lands, Public Parks, and Preserves	2,719.3	80	16.2%	1.3%
Agricultural	383.7	16	2.3%	0.3%
Private Recreation	384.3	48	2.3%	0.8%
Single-Family Residential	9,616.1	4,643	57.4%	77.8%
Two-Family Residential	37.2	45	0.2%	0.8%
Multi-Family Residential	17.7	12	0.1%	0.2%
Commercial	152.0	55	0.9%	0.9%
Community Services and Cultural Facilities	456.4	79	2.7%	1.3%
Public Utilities	810.7	186	4.8%	3.1%
Vacant Land	2,171.0	804	13.0%	13.5%
<b>TOWN TOTAL</b>	<b>16,748.4</b>	<b>5,968</b>	<b>100%</b>	<b>100%</b>
Source: Westchester County GIS 2022, Town of Lewisboro Assessor's Office 2022. Note: Numbers may add up to more than 100% due to rounding.				







# Comprehensive Plan Public Outreach and Engagement Plan

---



**COMPREHENSIVE  
PLAN STEERING  
COMMITTEE  
MEETINGS**



**THREE PUBLIC  
WORKSHOPS AND  
SIX HAMLET  
WORKSHOPS**



**OUTREACH TO  
TOWN COMMITTEES  
AND BOARDS**



**SURVEYS**



**WEB BLASTS**



**COMMUNITY  
OUTREACH TEAMS**

Website - <https://www.lewisborogov.com/cmpsc>

Email Contact- [steering@planlewisboro.com](mailto:steering@planlewisboro.com)

## First Round of Public Meetings

- In-person Meeting on January 21<sup>st</sup>
  - 122 people attended
- Two Virtual Meetings on February 6<sup>th</sup> and 9<sup>th</sup>
  - Approximately 35 people attended each evening
- Public Survey open until February 15<sup>th</sup>
  - To date, 74 people answered the survey

**TOTAL PARTICIPATION TO DATE- 266**

## Takeaways from First Round of Public Meetings

- Importance of Rural Character
- Protection of environmental resources
- Need for increased multi-mobility, especially sidewalks
- Need for additional road safety
- Upgrade community facilities and develop a multi-generational community center
- Need for increased infrastructure –wireless communications
- Additional housing options – Expand accessory dwelling unit options and explore other small-scale multi-family options
- Help existing businesses and strengthen hamlet areas
- Maintain historic and scenic resources – better develop community character
- Create a resilient and sustainable community
- Work towards improving the water quality of the lakes

## Next Steps

- Develop Draft Vision
- Develop Draft Goals and Objectives
- Hamlet-focused Public Meetings