

Town of Lewisboro Virtual Meeting

FEBRUARY 13, 2023



NPV

		PROPOSED SCHEDULE																			
TASK		MONTH																			
No.	Title	JUN	JUL	AUG	SEP	OCT	NOV	DEC	JAN	FEB	MAR	APR	MAY	JUN	JUL	AUG	SEP	OCT	NOV	DEC	JAN
A.	Project Kickoff																				
	Document Review																				
	Kickoff Meeting	•																			
	Site Visit																				
B	Community Outreach Plan		•																		
C	Existing Conditions																				
	Existing Conditions Analysis			•		•	•														
	Opportunity Sites																				
	Draft Report																				
D	First Workshop, Public Survey and Meetings with Town Boards, Councils, and Committees																				
	First Workshop								◊	◊											
	Public Online Survey									•											
	Town Committee Meetings																				
	Town Land Use Board and Council Meetings																				
	Town Board Work Sessions									○	○										
E	Develop Vision, Goals and Objectives																				
	Visioning, Goals, Objectives										•										
	Public Workshop (Town and Hamlets)											◊	◊								
	Town Land Use Board and Council Meetings																				
	Town Board Work Session													○							
F	Draft Comprehensive Plan																				
	Draft Comprehensive Plan													•		•					
	Town Board Review/Meetings															○	○				
	Public Hearing																	◊			
G	Zoning Amendments																				
	Prepare Zoning Amendments																	•	•		
	Public Workshop																	◊			
	Town Board Review/Meetings																			○	
H	SEQRA/Adoption																				
	SEQR EAF Part I, II, and III																				
	Town Board Hearing																		◊		
	Town Board Review/Meetings																			○	
	Adoption of Plan/Zoning																				○

• Comprehensive Plan Committee Meetings
◊ Public Workshop/Public Hearing

○ Town Board Meetings

Deliverables

Existing Conditions Report

Baseline Inventory (Where are we now?)

Provides the basis for recommendations and further analysis

- Maps & Data
- Community Engagement Strategy
- Existing Conditions Report

Comprehensive Plan

Vision, Goals, Objectives & Recommendations (where are we going?)

- Public Outreach
- Surveys & Workshops
- Draft Document
- Refer to the Town Board

Zoning Amendments

Comprehensive Plan Recommendations become Draft Zoning

- Draft zoning
- State Environmental Quality Review
- Town Board Adopts Plan and Zoning together

Inventory and Analysis



- **Plan Topics:**
 - Land Use & Zoning
 - Environmental Resources
 - Transportation & Mobility
 - Community Facilities
 - Infrastructure – stormwater, sewer, water, and wireless communications
 - Demographics
 - Housing
 - Economics
 - Parks and Recreation/Open Space
 - Historic and Scenic Resources
 - Resiliency & Climate Change
 - Community Character

Population of Lewisboro

Jurisdiction	1990	2000	2010	2020	Percent Change: 1990 to 2020
Westchester County	874,866	923,459	949,113	1,004,457	12.90%
Town of Lewisboro	11,313	12,324	12,411	12,265	7.76%
Source: 1990, 2000, 2010, and 2020 Decennial Census.					

Race/Ethnicity of Lewisboro

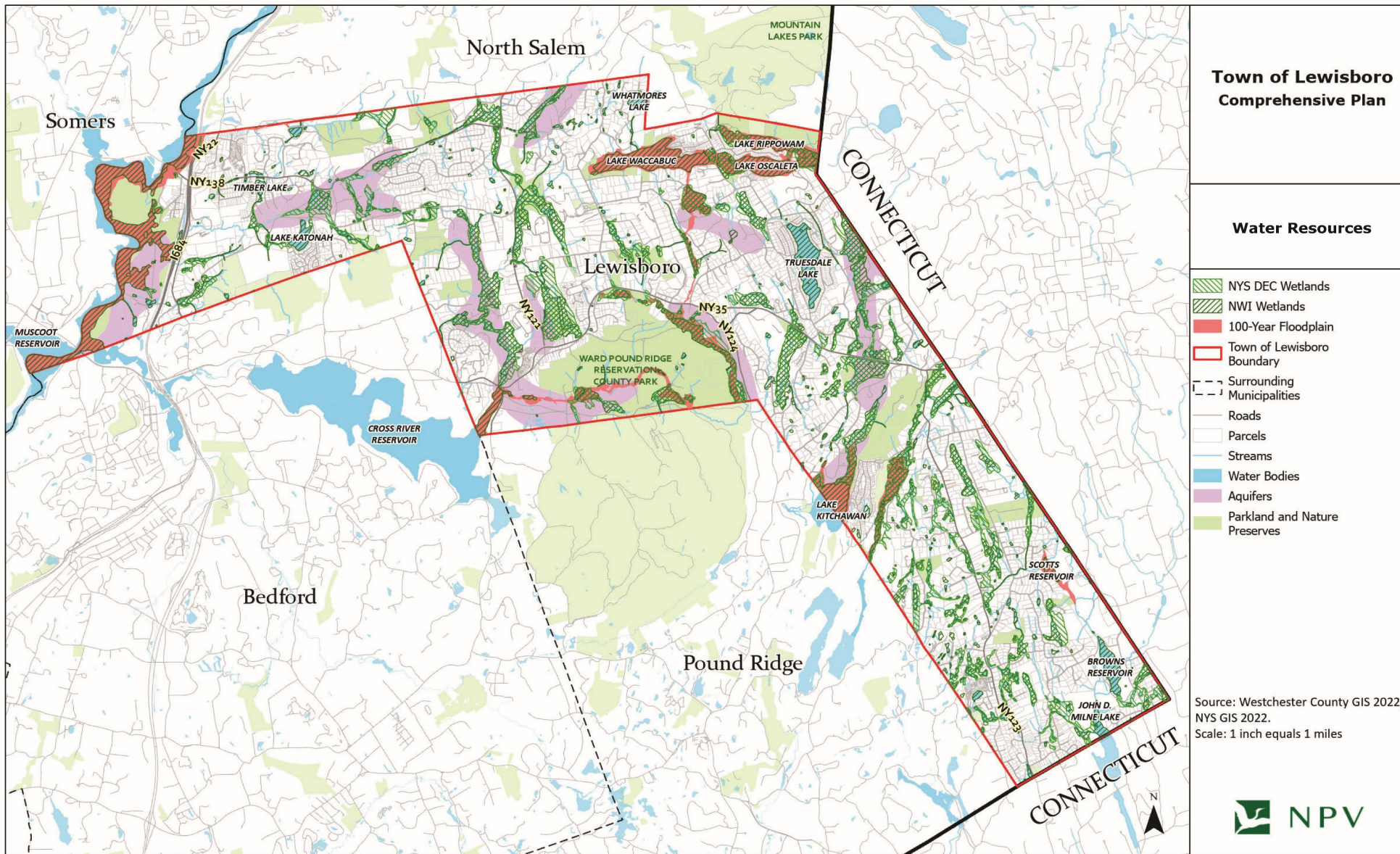
	Town of Lewisboro				Westchester County	
	2010		2020		2020	
	Count	Percent of total	Count	Percent of total	Count	Percent of total
Total Persons	12,411	100%	12,265	100%	1,004,457	100%
White Alone	11,187	90.1%	10,107	82.4%	497,684	49.5%
Black or African American Alone	153	1.2%	191	1.6%	131,010	13.0%
American Indian and Alaska Native Alone	8	<1%	8	<1%	1,017	<1%
Asian Alone	294	2.4%	435	3.5%	64,907	6.5%
Pacific Islander Alone	1	<1%	0	0%	150	<1%
Some Other Race Alone	27	<1%	71	<1%	8,651	1.0%
Two or More Races	189	1.5%	484	3.8%	31,704	3.2%
Hispanic Origin	552	4.4%	969	7.9%	269,334	27.0%

Source: 2010 and 2020 Decennial Census.

Note: Numbers may add up to more than 100% due to rounding.

Land Use	Acres	Number of Tax Parcels	% Acres in Town	% Tax Parcels in Town	
Wild, Forested, Conservation Lands, Public Parks, and Preserves	2,719.3	80	16.2%	1.3%	
Agricultural	383.7	16	2.3%	0.3%	
Private Recreation	384.3	48	2.3%	0.8%	
Single-Family Residential	9,616.1	4,643	57.4%	77.8%	
Two-Family Residential	37.2	45	0.2%	0.8%	
Multi-Family Residential	17.7	12	0.1%	0.2%	
Commercial	152.0	55	0.9%	0.9%	
Community Services and Cultural Facilities	456.4	79	2.7%	1.3%	
Public Utilities	810.7	186	4.8%	3.1%	
Vacant Land	2,171.0	804	13.0%	13.5%	
TOWN TOTAL	16,748.4	5,968	100%	100%	
Source: Westchester County GIS 2022, Town of Lewisboro Assessor's Office 2022. Note: Numbers may add up to more than 100% due to rounding.					

Land Use



Comprehensive Plan Public Outreach and Engagement Plan



**COMPREHENSIVE
PLAN STEERING
COMMITTEE
MEETINGS**



**THREE PUBLIC
WORKSHOPS AND
SIX HAMLET
WORKSHOPS**



**OUTREACH TO
TOWN COMMITTEES
AND BOARDS**



SURVEYS



SOCIAL MEDIA

Website - <https://www.lewisborogov.com/cmppsc>

Email Contact- steering@planlewisboro.com

First Round of Public Meetings

- In-person Meeting on January 21st
 - 122 people attended
- Two Virtual Meetings on February 6th and 9th
 - Approximately 35 people attended each evening
- Public Survey open until February 15th
 - To date, 74 people answered the survey

TOTAL PARTICIPATION TO DATE- 266

Takeaways from First Round of Public Meetings

- Importance of Rural Character
- Protection of environmental resources
- Need for increased multi-mobility, especially sidewalks
- Need for additional road safety
- Upgrade community facilities and develop a multi-generational community center
- Need for increased infrastructure –wireless communications
- Additional housing options – Expand accessory dwelling unit options and explore other small-scale multi-family options
- Help existing businesses and strengthen hamlet areas
- Maintain historic and scenic resources – better develop community character
- Create a resilient and sustainable community
- Work towards improving the water quality of the lakes

Next Steps

- Develop Draft Vision
- Develop Draft Goals and Objectives
- Hamlet-focused Public Meetings